

U.S. Army Corps of Engineers Disaster Response Missions, Roles & Readiness

Eric D. (Ric) Hines, PE
February 2012



US Army Corps of Engineers
BUILDING STRONG[®]



Briefing Overview

- USACE Background
- Emergency Roles and Responsibilities
- USACE Missions
- USACE / FEMA Coordination and Mission Execution
- Remedial Action Program



BUILDING STRONG®

U.S. Army Corps of Engineers Background



BUILDING STRONG®

Civil Works \$12.8 Billion

- 24,000 personnel
- Navigation
- Hydropower
- Flood Control
- Shore Protection
- Water Supply
- Regulatory
- Recreation

HQ

9 Divisions

45 Districts

- Homeland Security
- Environmental
- Real Estate

Military Programs \$20.1 Billion

- 10,000 personnel
- Military Construction
- Contingency Ops
- Installation Support
- International / Interagency Support

Engineer
Commands

Contractors execute
65% of architect-engineer
services
and 100% of construction

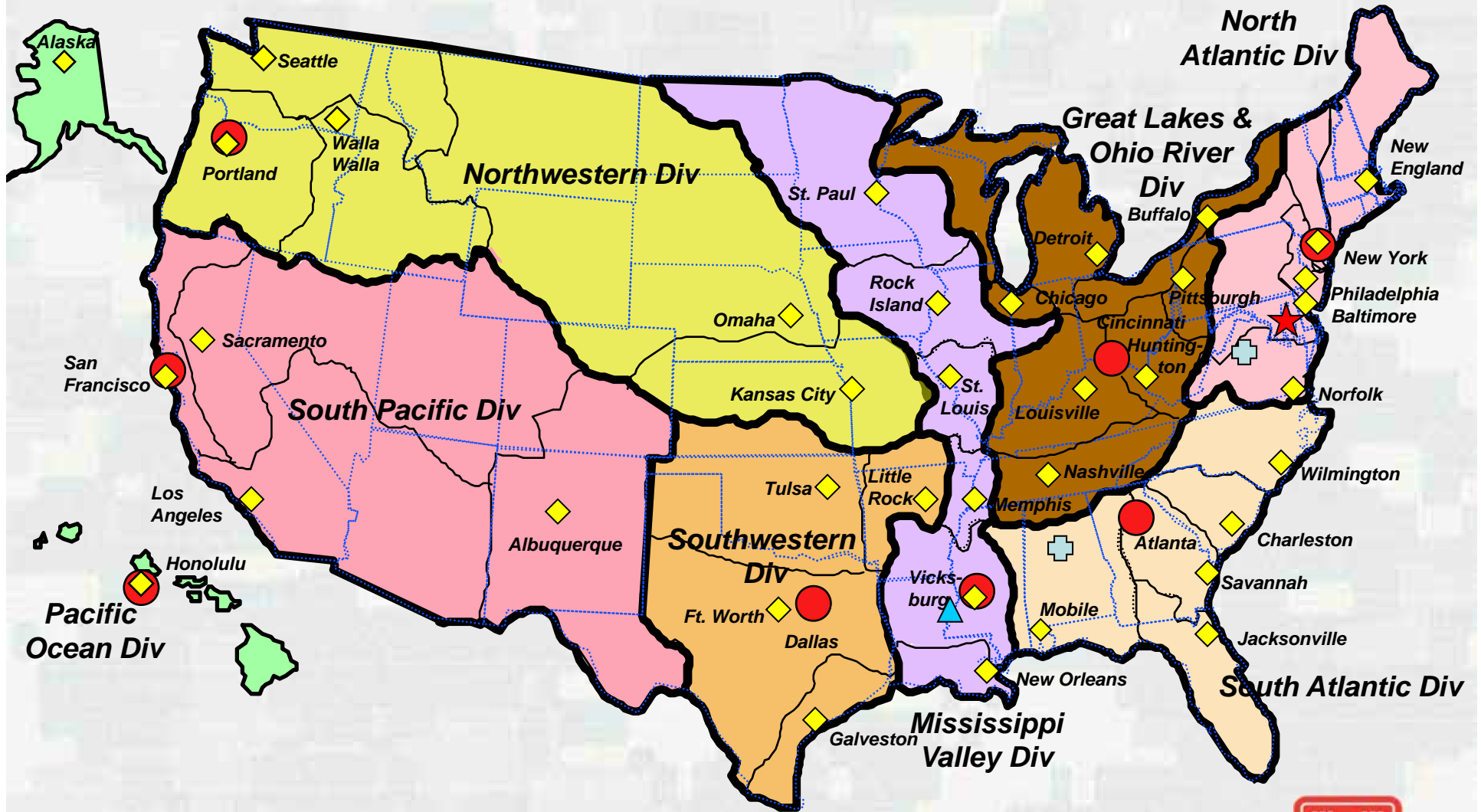
- Engineer Research and Development Center

- Seven diverse research laboratories
- \$700 M annual research program



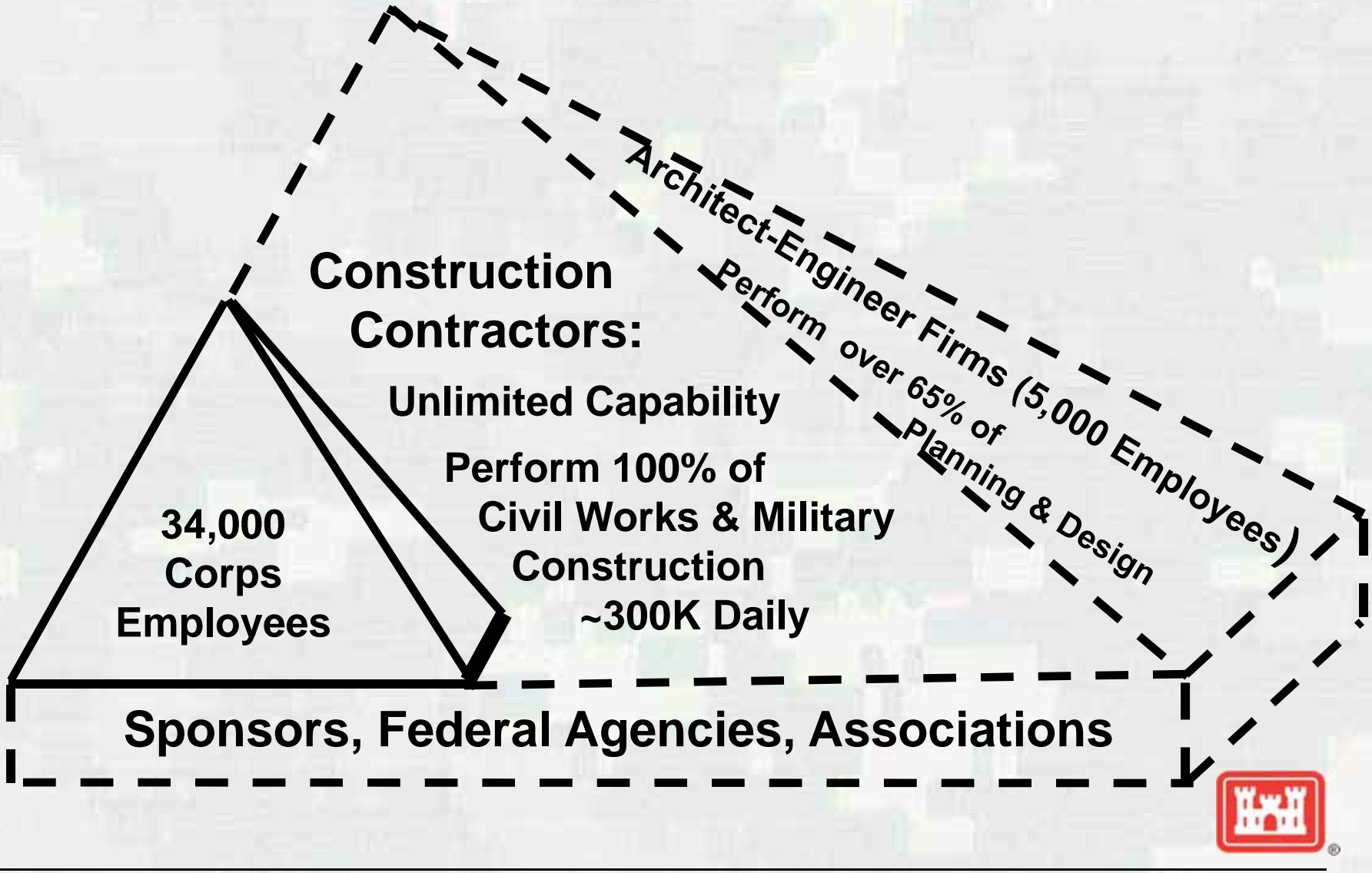
BUILDING STRONG®

USACE Division Boundaries



BUILDING STRONG®

Private Sector Partnerships



BUILDING STRONG®

Emergency Roles and Responsibilities



BUILDING STRONG®

U.S. Army Corps of Engineers Emergency Response

DOD Support



DHS/FEMA Support



USACE Authorities



BUILDING STRONG®

Public Law 84-99: Flood Control and Coastal Emergencies

Prepare: Advance Measures

- Imminent threat / Unusual flooding
- Temporary in nature
- Protects life and property

Respond: Floodfight

- Save life and property
- Temporary in nature
- Emergency Debris
- Emergency Infrastructure

Recover: Levee Rehabilitation

- Levees in Federal Program

Mitigate

- Identify mitigation opportunities
- Intergovernmental TF



An Emergency Levee Protects the City at Second Street during the 2001 flood.

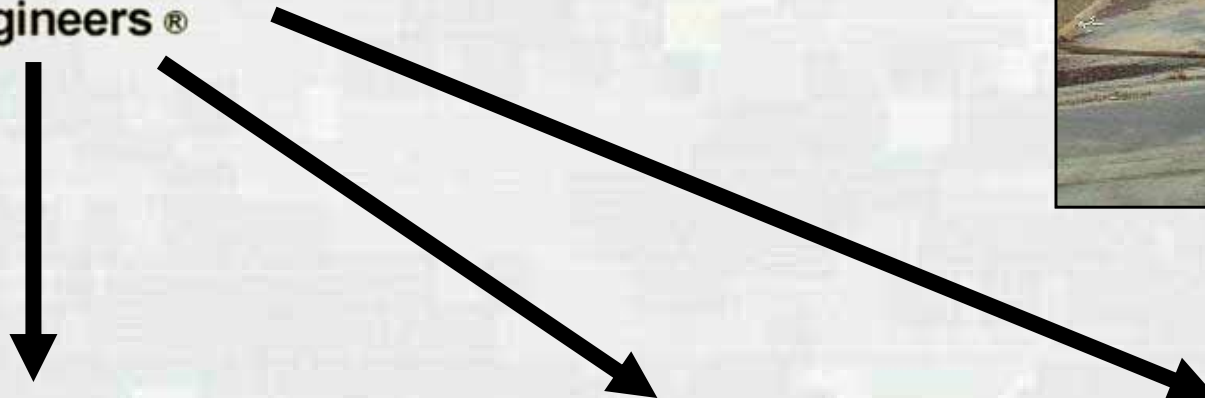


BUILDING STRONG®

National Response Framework



US Army Corps
of Engineers®



**Coordinating
Agency**

ESF#3 Public
Works and
Engineering

**Primary
Agency**

ESF#3 Public
Works and
Engineering

Support Agency

ESF#6
ESF#9
ESF#14

BUILDING STRONG®

Key Support Agencies for ESF#3

Supporting Agencies for
Public Works and
Engineering

Department of Defense

Department of Energy

Department of Health and Human
Services

Department of Homeland Security

Department of Transportation

Environmental Protection Agency

Department of Interior



BUILDING STRONG®

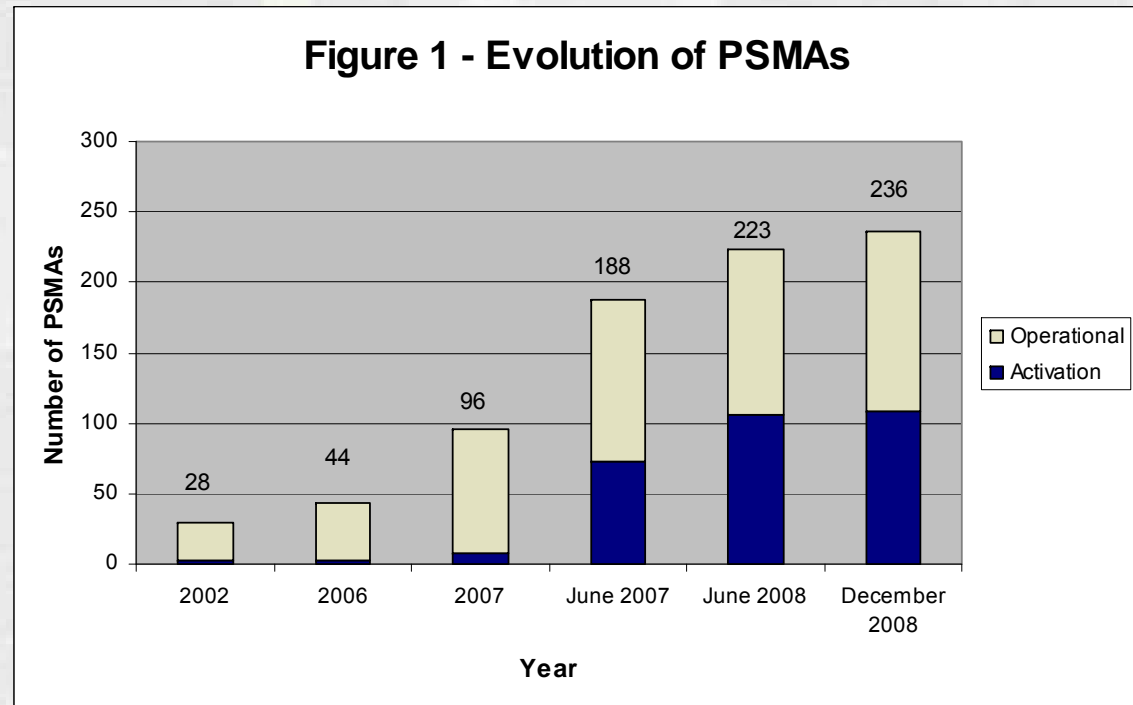
USACE Missions



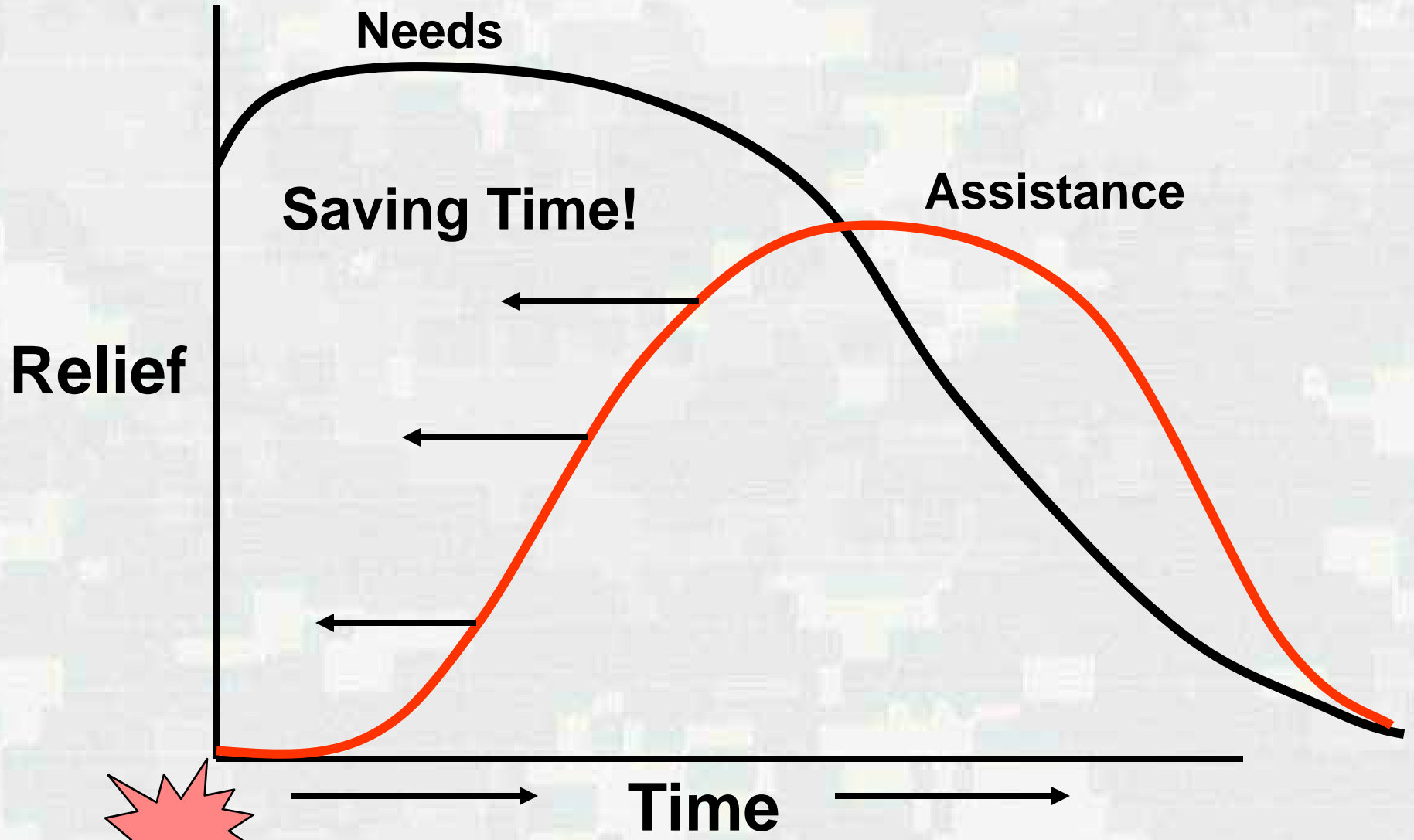
BUILDING STRONG®

History of USACE Pre-Scripted Mission Assignments (PSMAs)

- 1999: First USACE PSMAs
- Pre-Negotiated Scope of Work
- Agreement on Costs
- Save time on mobilization and execution



BUILDING STRONG®



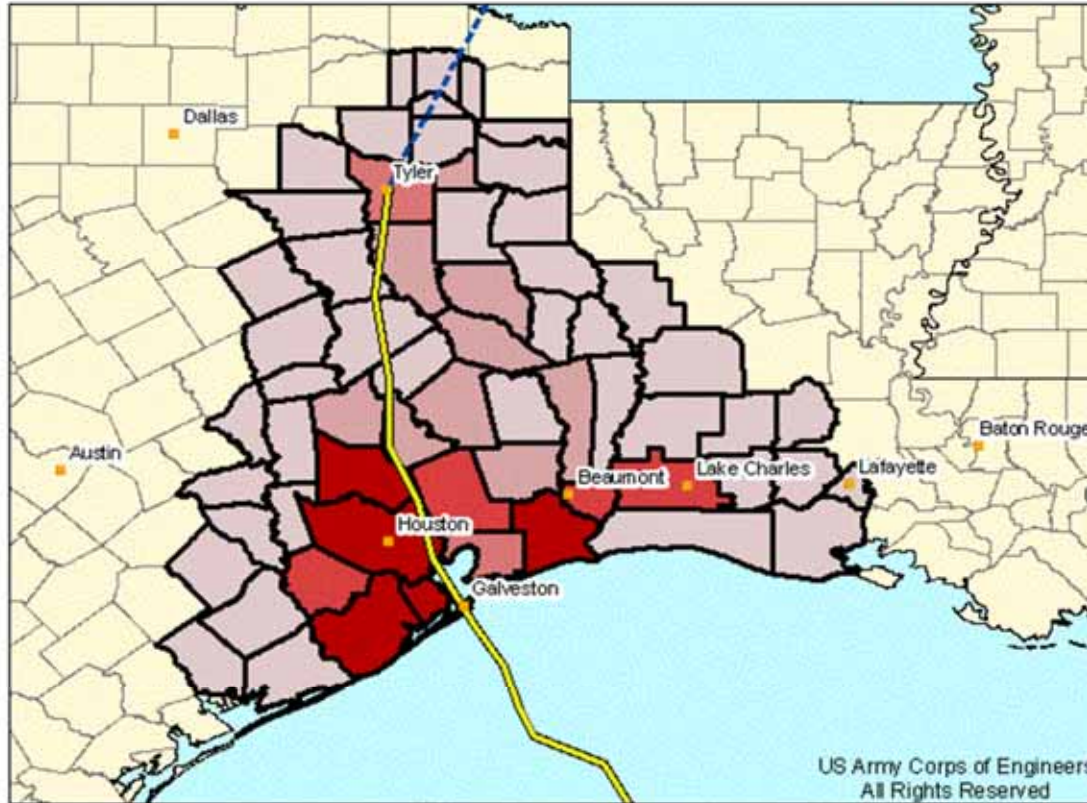


US Army Corps of Engineers

Hurricane Ike Debris Model

Landfall Plus About 16 Hours

For Planning Purposes Only!



Post Landfall Debris Model Results

Texas - 36,229,000 Yards
Louisiana - 888,000 Yards

Model results per County on following page

This model is based on a Category 3 storm making landfall near Galveston, TX.

Forecast Track

Historic Track

Debris

- < 100,000 cubic yards
- 100,000 - 249,999 cubic yards
- 250,000 - 499,999 cubic yards
- 500,000 - 999,999 cubic yards
- >1,000,000 cubic yards

US Army Corps of Engineers
All Rights Reserved

0 200 400 Miles

Information provided on this page displays a Category 3 storm making landfall near Galveston, TX. These projections are based on information from the NHC (1700 EDT 09/13/2008) forecast. The amount of debris forecasted is possible total volume, not necessarily the volume that may need to be removed with Federal funds, but does not include volume that may be covered by private insurance. Debris volume may include storm surge generated debris.

Details about this model may be obtained at <http://www.enlink.usace.army.mil> or contact Louisville District staff at DLI-CELRL-GIS@usace.army.mil

Hurricane Ike Debris Model

Generated By:

Siemsen/Deatrick, LRL 1900 EDT 09/13/2008

Sources:

HURREVAC
LRL-DEBRIS

Page 2 of 14

Pre-Declaration: Mobilization of Equipment



**Deployable Tactical
Operation Center**



Generator



Satellite Communications



Rapid Response Vehicle

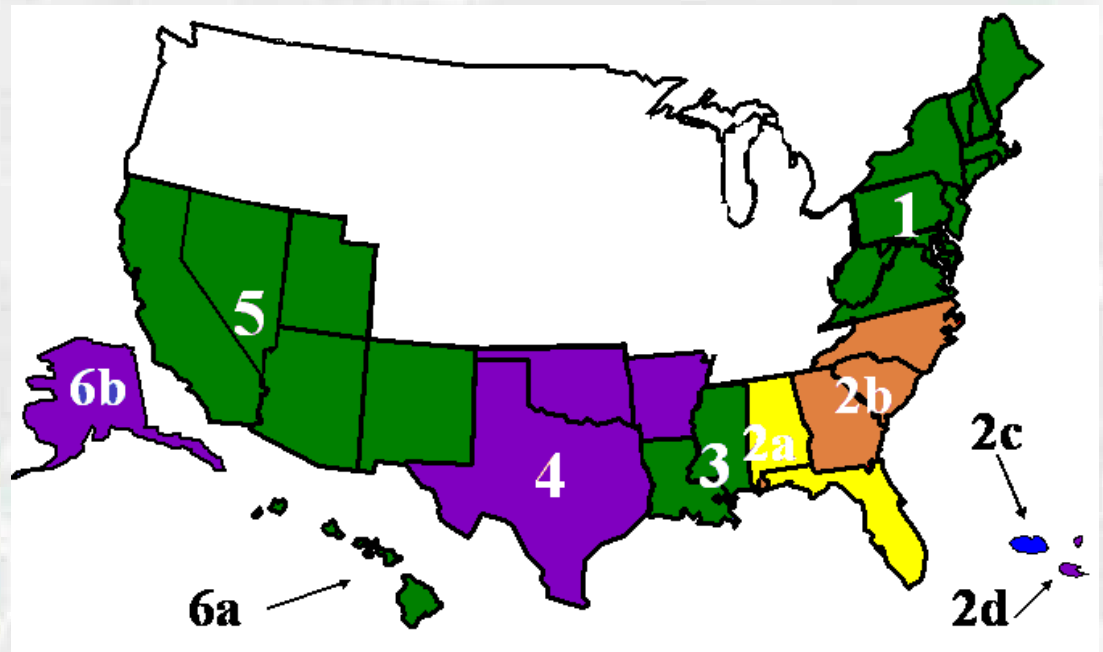


BUILDING STRONG®

Pre-Declaration: Mobilization of Contractors

- ▶ Immediate response
- ▶ Maximum local hiring and subcontracting
- ▶ Pricing (known & stable)
- ▶ Costs reduced
- ▶ Partners with Private Sector
- ▶ Improves performance
- ▶ Standardizes contracts

Debris ACI Contractors



BUILDING STRONG®

Post Declaration Response

Temporary
Emergency Power



Water / Ice /
Commodities
Distribution



BUILDING STRONG®

Post Declaration Response

Support to Search
and Rescue



Debris
Clearance



BUILDING STRONG®

Post Declaration Recovery



Temporary
Roofing

Critical Public Facilities



BUILDING STRONG®

Post Declaration Recovery



Critical Public Facilities



BUILDING STRONG®

Post Declaration Recovery



Temporary Housing



BUILDING STRONG®

Actions

- Scope Mission
- Determine Roles and Responsibilities
- Develop Debris Management Plan
- Award / Task Contractor
- Debris Removal from Curbside
- Reduction and Disposal
- Demolition

Post Dec Recovery: Debris Management



BUILDING STRONG®

Sub-Taskings to Other Agencies

- EPA: Water / Wastewater Treatment / Hazardous Debris
- Department of Interior: Temporary Roofing / Debris Management
- Coast Guard: Vessel Assistance
- Navy Supervisor of Salvage: Obstructions in Waterways



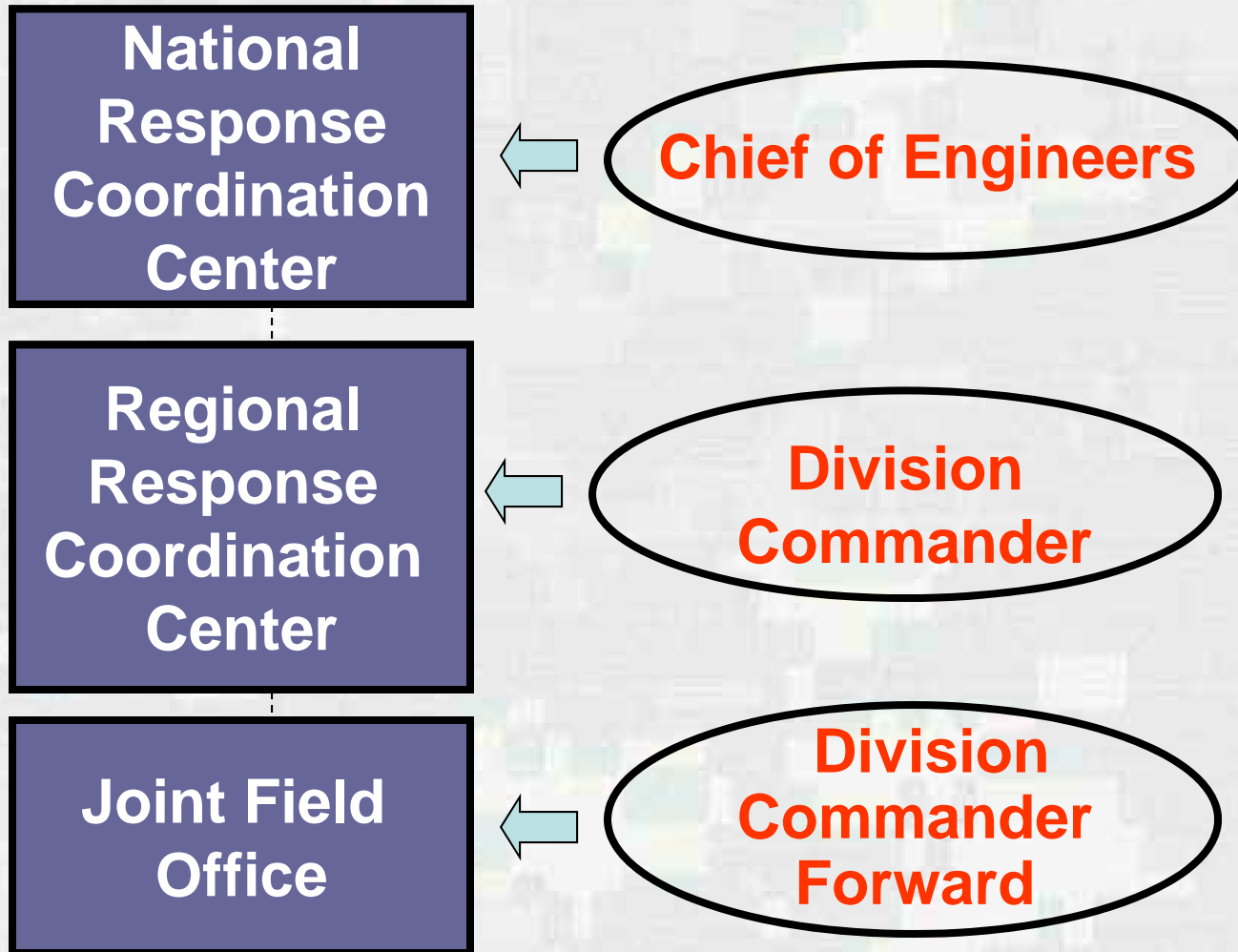
BUILDING STRONG®

USACE / FEMA Coordination and Mission Execution

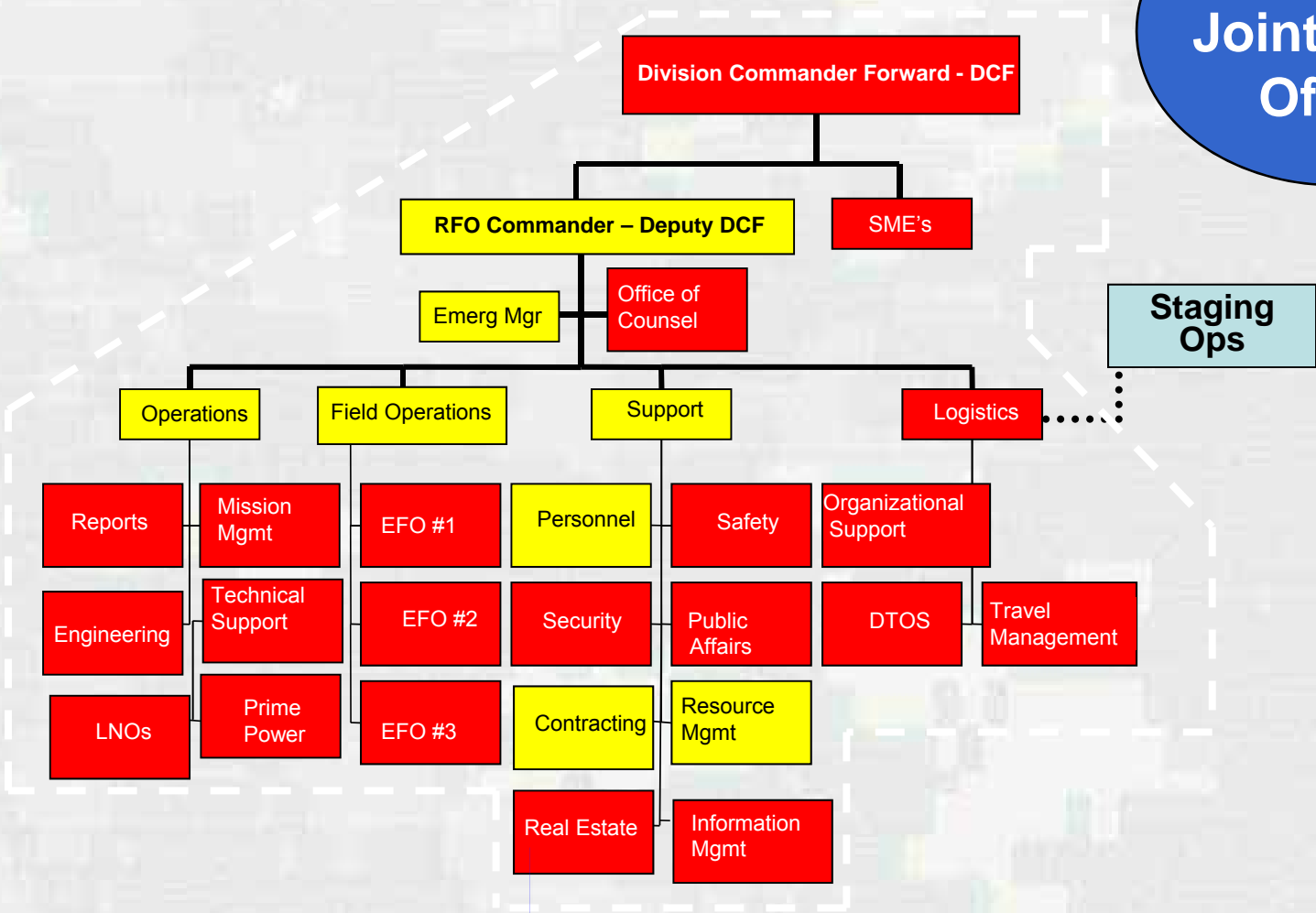
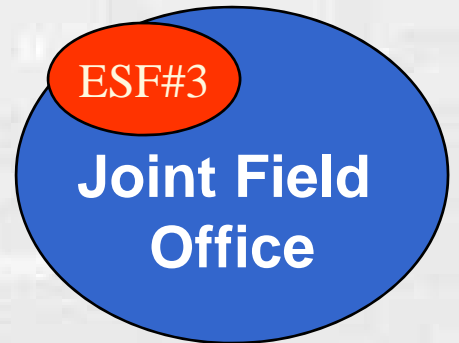


BUILDING STRONG®

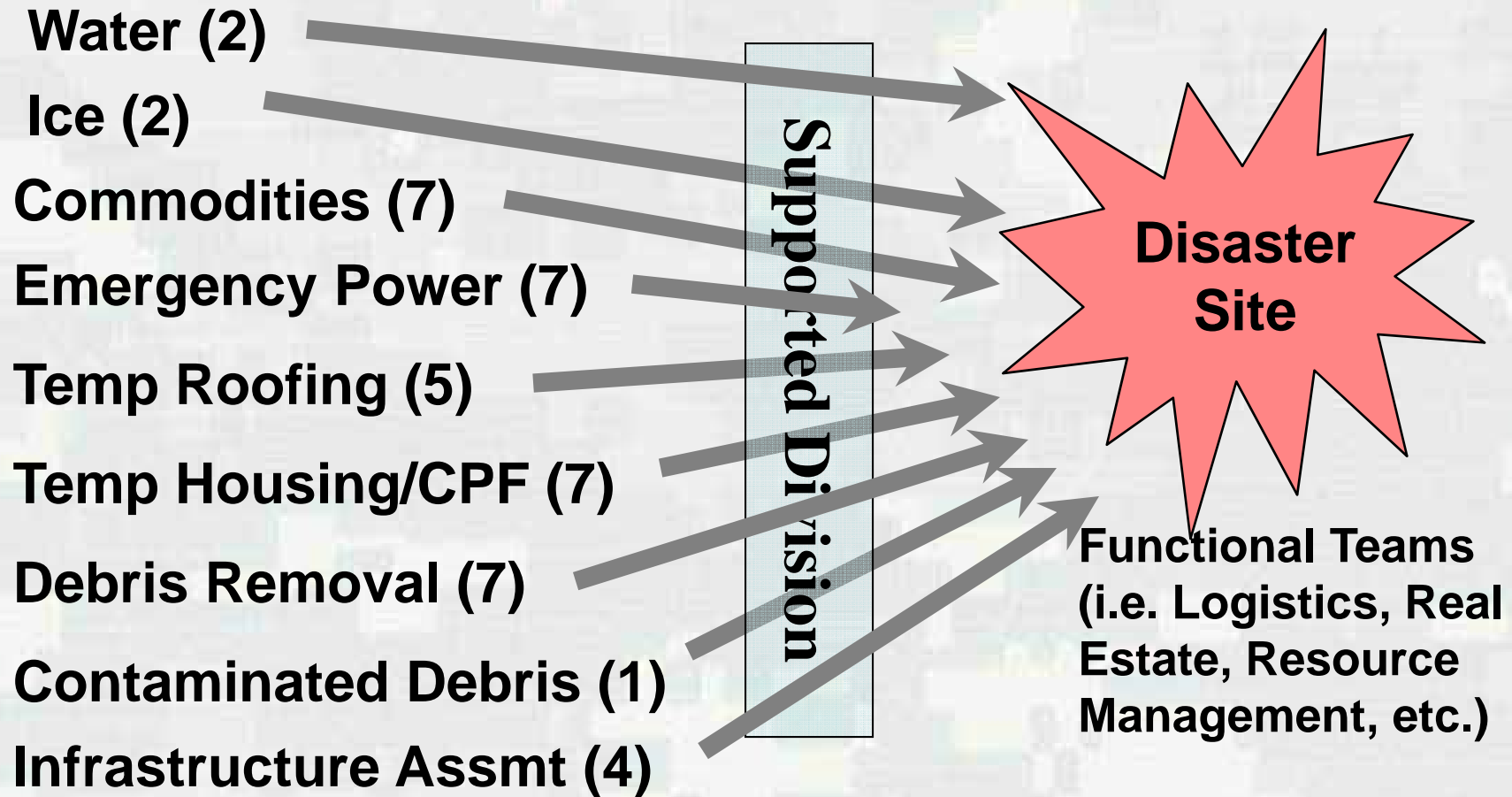
Response Structure



USACE Recovery Field Office (RFO)



Planning and Response Teams (PRT)



Deployment within 6 hours



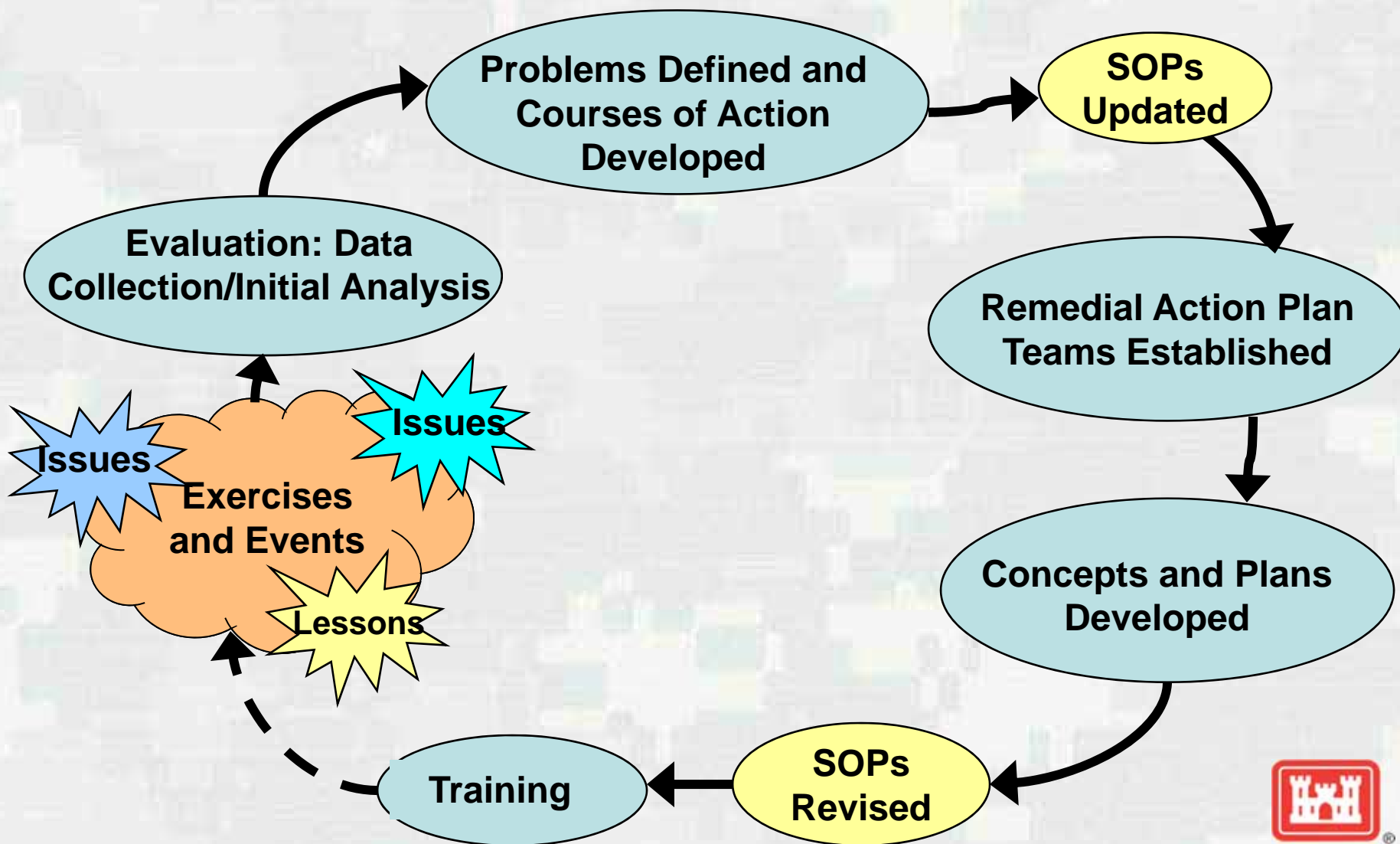
BUILDING STRONG®

USACE / FEMA Remedial Action Program



BUILDING STRONG®

Remedial Action Program

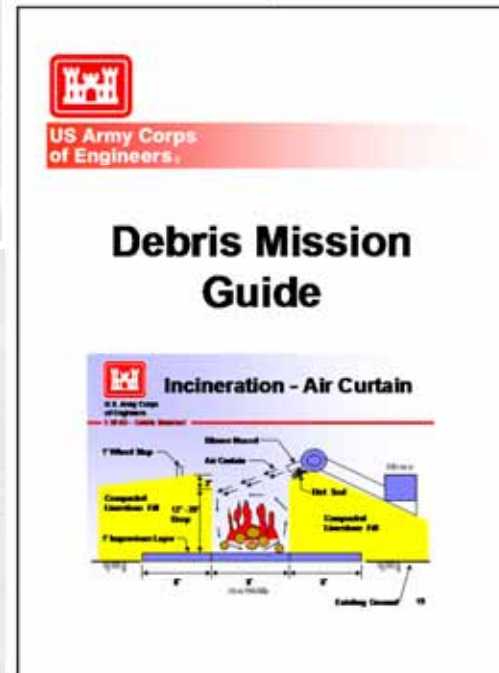
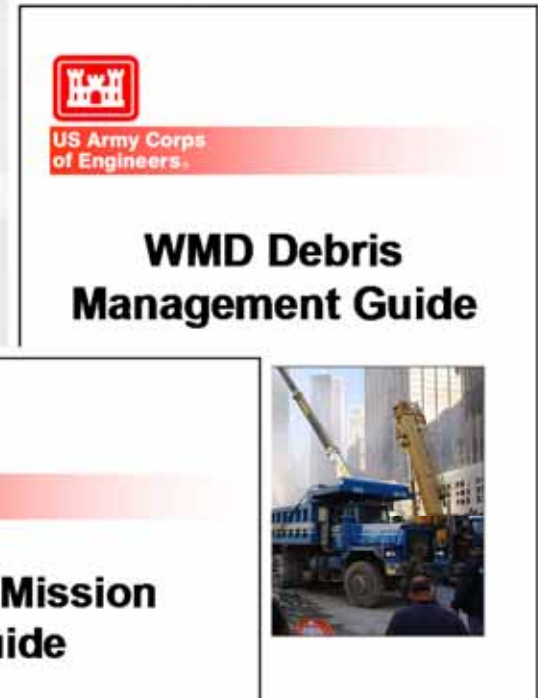


SOP & Field Operational Guides

Overview: “Fact Sheet” with concise description of capability, team and resources.

Standard Operating Procedure: A reference document, detailing the procedures for performing a function (who deploys, when, where and how organize).

Field Operations Guide: A durable pocket or desk guide, containing essential nuts-and-bolts information needed to perform specific assignments or functions.



Questions?

Ric Hines
eric.d.hines@usace.army.mil
(402) 697-2624



BUILDING STRONG®