

To NH Department of Environmental Services Coastal Offices at Pease International Tradeport

FROM THE SOUTH:

Via I-95

Take exit 4 for “**Spaulding Turnpike, 4 and Rte. 16 , NH Lakes, White Moutains**” which exits to the LEFT. This will take you directly onto north Rte. 16/Spaulding Turnpike towards Newington and Dover. Follow the Spaulding Turnpike /Route 16 northbound and take Exit 1, **Pease Int'l Tradeport**. Turn left at the bottom of the Exit 1 ramp. Cross under the Spaulding Turnpike, Stay to the two right lanes. You are now on the northern entrance road (Pease Boulevard) to Pease International Tradeport. Then follow directions at bottom of this page.

Via Spaulding Turnpike/State Route 16 OR from the Portsmouth Traffic Circle

Follow the Spaulding Turnpike /Route 16 northbound and exit at Exit 1, **Pease Int'l Tradeport**. Turn left at the bottom of the Exit 1 ramp. Cross under the Spaulding Turnpike, you are now at the Pease Int. Tradeport

FROM THE NORTH:

Via I-95

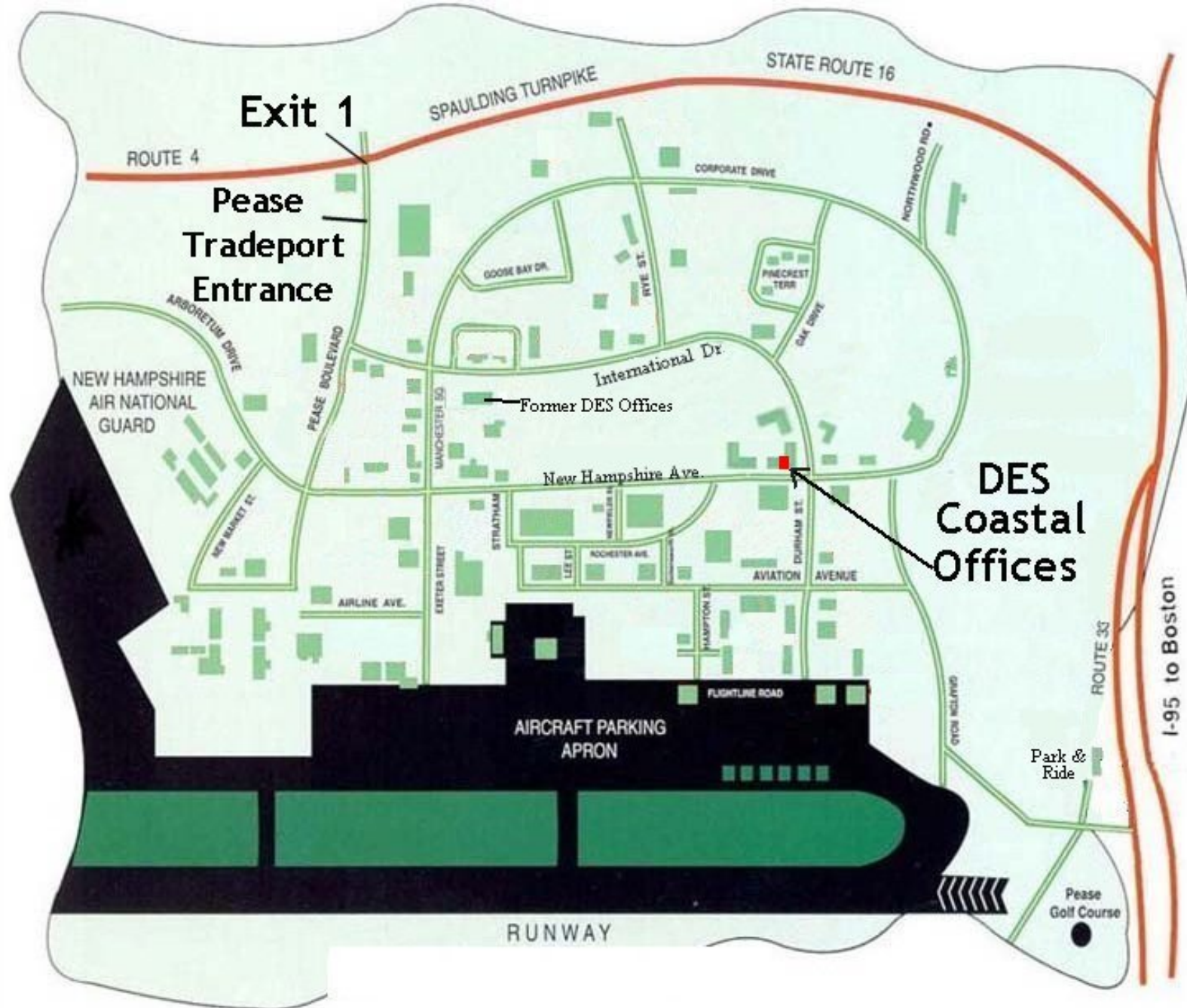
Follow Interstate 95 southbound and exit at Exit 5. This will bring you directly onto the Spaulding Turnpike/Rte 16. Follow the Spaulding Turnpike /Route 16 northbound and Take exit 1. **Pease Int'l Tradeport** Turn left at the bottom of the Exit 1 ramp. Cross under the Spaulding Turnpike. Stay to the right two lanes. You are now on the northern entrance road (Pease Boulevard) to Pease International Tradeport.

Via the Spaulding Turnpike (State Route 16)

Follow the Spaulding Turnpike/Route 16 southbound and exit at Exit 1, *Pease Int'l Tradeport* . Turn right at the bottom of the Exit 1 ramp. You are now on the northern entrance road (Pease Boulevard) to Pease International Tradeport.

ONCE INSIDE THE PEASE TRADEPORT.

Go to the first set of traffic lights and take a left . Go a short distance past the Bank of NH to a large 4 way intersection. Go straight through this intersection for another 1 mile to a 4 way intersection. Take a right onto New Hampshire Drive. Take the next right into the office complex. Take an immediate right into the parking lot. Find the DES office at **Unit 175** approximately ½ way along the building. **Note the “NH Dept. of Environmental Services” sign at this corner.**



Exit 1

Pease
Tradeport
Entrance

NEW HAMPSHIRE
AIR NATIONAL
GUARD

Former DES Offices

DES
Coastal
Offices

AIRCRAFT PARKING
APRON

RUNWAY

Park &
Ride

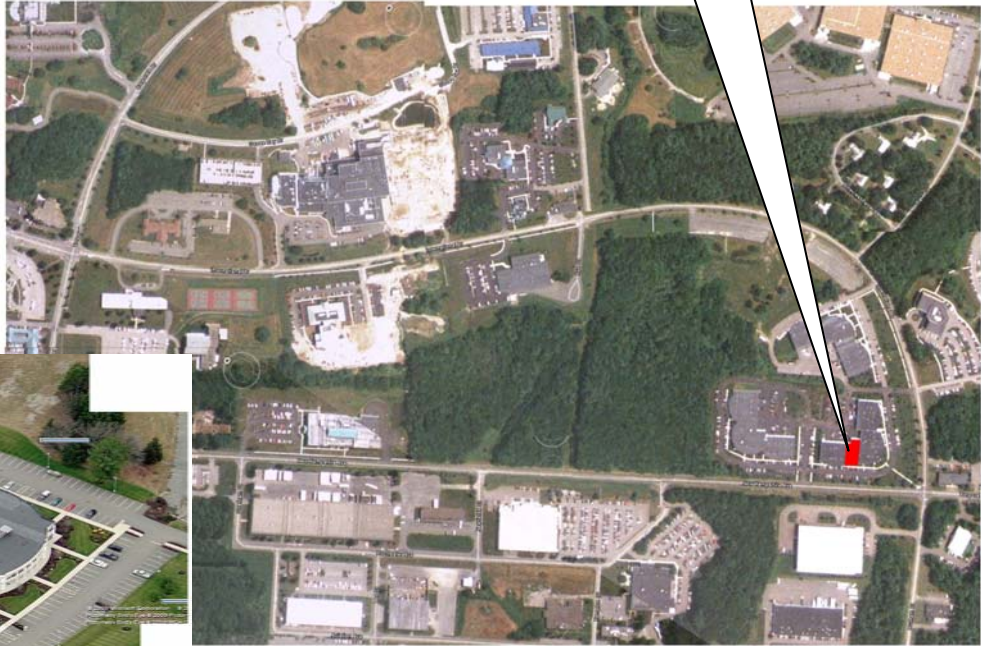
Pease
Golf Course

I-95 to Boston



DES Offices
222 International
Drive
SUITE 175

Parking is available
around the building.
NOTE that there are a
few "reserved" spaces
that are marked with



Main
Entrance &
parking