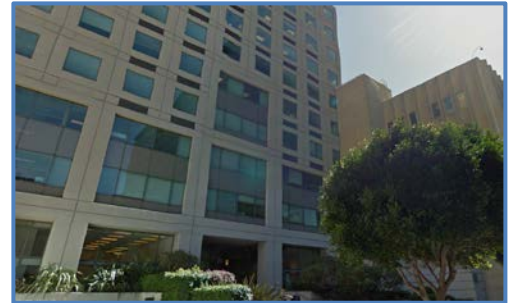

Schedule of Events

The Superfund 101 training will be held Monday, March 10 through Friday, March 14, 2014, at the U.S. EPA Region 9 office in San Francisco, California. The training begins each day at 8:30 a.m. and ends on Friday at 3:00 p.m. Please plan your flights accordingly.

The U.S. EPA Region 9 office is located at:

75 Hawthorne Street
San Francisco, California 94105
<http://www.epa.gov/region9/visitor.html>

Please note: The training will be held at the U.S. EPA Region 9 office in San Francisco, California; sleeping room blocks have been established at both the Galleria Park Hotel and the Marines' Memorial Club and Hotel in San Francisco, California.



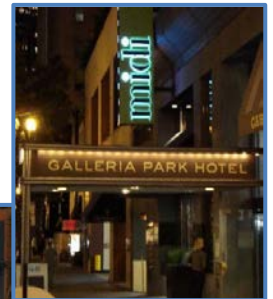
Note: Because of a city-wide convention, there are limited rooms available in San Francisco. Participants are strongly encouraged to reserve rooms as soon as possible at one of the available room blocks below.

There are several parking lots near the U.S. EPA Region 9 building, all at varying rates. Parking is also available beneath the 75 Hawthorne Street building itself (although it is more expensive than many nearby lots).

Galleria Park Hotel

191 Sutter Street
San Francisco, California 94104
Phone: (415) 781-3060

For additional information about the Galleria Park Hotel, visit:
<http://www.jdvhotels.com/hotels/california/san-francisco-hotels/galleria-park-hotel>



Marines' Memorial Club and Hotel

609 Sutter Street
San Francisco, California 94102
Phone: (415) 673-6672

For additional information about the Marines' Memorial Club and Hotel, visit:
<http://www.marineclub.com>



Sleeping Room Reservations

A block of rooms has been reserved at both the Galleria Park Hotel and the Marines' Memorial Club and Hotel in San Francisco, California. The lodging rate at both hotels is the prevailing government rate of \$189 per night plus 16.315 percent sales tax. Reservations need to be made before **5:00 p.m. Pacific Time on Monday, February 24, 2014**, to receive the government rate.

Included under the EPA room block is complimentary Internet access in your sleeping room. Both hotels also offer complimentary evening receptions and morning beverages.

To reserve your room for the Galleria Park Hotel please call hotel reservations at (800) 792-9639. Guests will need to mention that you are reserving under the **"EPA Training Group"** room block.

To reserve your room for the Marines' Memorial Club and Hotel, please call hotel reservations at (800) 562-7463. Guests will need to mention that you are reserving under the **"EPA Training Group"** room block.

You are responsible for cancelling your hotel reservation if you cannot attend. Both hotels require a notice of cancellation by 5:00 p.m. Pacific Time, 24 hours before the day of your scheduled arrival. If you fail to provide notice, one night's lodging and tax will be charged to your credit card.

Upon check-in you will be asked to verify your departure date; if you check-out earlier from your verified departure date, an early departure fee of \$100 will be charged to your credit card.

At both hotels, check-in begins after 3:00 p.m., and check-out time is at 12:00 p.m.

What to Pack for the San Francisco Area

Dress is casual for San Francisco weather. Temperatures range from 50°F at night to 65°F during the day. Please be advised that the temperatures in the training room do not reflect temperatures outside. Be sure to pack a jacket or sweater to wear while you attend the Superfund 101 training.

Dining

Both hotels offer several nearby dining options. The Marines' Memorial Club and Hotel has steakhouse located on the top floor of the hotel. More information on the Leatherneck Steakhouse and Lounge, can be found at: <http://www.marineclub.com/dining.php>

Health, Fitness and Recreation

Both hotels offer guests access to on-site fitness centers, including cardio and strength training equipment. The Marines' Memorial Club and Hotel offers a few additional fitness options, including an indoor heated lap pool.

Travel Information

The San Francisco area is served by the San Francisco International Airport (SFO). SFO is located approximately 15 miles from downtown San Francisco. Additional information about SFO airport is available at <http://www.sfo.com>. Participants may also want to consider Oakland International Airport (OAK). OAK is located approximately 20 miles from downtown San Francisco. Additional information about OAK airport is available at <http://www.flyoakland.com/>.

San Francisco, California is located in the Pacific Time Zone.

Ground Transportation

The Bay Area Rapid Transit (BART) train provides access to downtown San Francisco from SFO airport. Trains leave SFO every 15 minutes and the ride is approximately 30 minutes each way. Fares are \$8.25 one-way.

Additional information about the BART is available at <http://www.bart.gov>.

Both hotels are located near the Montgomery Street BART stop.

Directions from SFO to the hotels using BART:

- ❖ At SFO, follow signs for BART.
- ❖ Board the Yellow Line towards Pittsburg/Bay Point. The Yellow Line is the only train in operation at SFO.
- ❖ Exit at the Montgomery Street stop.
- ❖ From the Montgomery Street stop, walk southwest on Market Street and then turn right onto Montgomery Street.
- ❖ Turn left on Sutter Street and Galleria Park Hotel will be on your left at 191 Sutter Street.
- ❖ To get to the Marines' Memorial Club and Hotel, continue walking on Sutter for another 4 blocks and hotel will be on your left at 609 Sutter Street.



For SFO airport shuttles, the Galleria Park Hotel recommends Lorrie's/Go Shuttle, which is currently \$32 round trip, not including gratuity. Shuttles should be booked in advance at <http://qosfovan.com>. Airport Express also offers shuttle service to both hotels. Shuttles are currently \$30 round trip, not including gratuity, and must be booked in advance at <http://www.airportexpresssf.com>.

Taxi fare between SFO and the hotel is approximately \$45 each way, not including gratuity.

Valetis available at the Galleria Park Hotel for \$42 per night, plus tax, with in and out privileges. Secure self-parking is available at the Olympic Garage, next to the Marines' Memorial Club and Hotel for \$30 per night, plus tax, with in and out privileges.

Driving Directions to EPA Region 9 San Francisco

From San Francisco International Airport, Approximately 15 miles, 20 minutes

- ❖ Exit the airport towards US 101 North
- ❖ Take the I-80 exit towards Bay Bridge
- ❖ Merge onto I-80 East
- ❖ Take the 4th Street exit
- ❖ Turn left onto Bryant Street
- ❖ Take the second left onto 2nd Street
- ❖ Turn left onto Howard Street
- ❖ Take the first left onto Hawthorne Street. EPA Region 9 will be on your left.

From Oakland International Airport, Approximately 20 miles, 30 minutes

- ❖ Exit the airport towards I-880 N to Downtown/Oakland
- ❖ Merge onto I-880 N
- ❖ Follow signs for I-80 W/San Francisco and merge onto I-80 W (partial toll road)
- ❖ Exit onto Fremont Street
- ❖ Turn left onto Howard Street
- ❖ Turn left onto Hawthorne Street. EPA Region 9 will be on your left.

Walking Directions to EPA Region 9 San Francisco

From Marines' Memorial Club and Hotel and Galleria Park Hotel (both located on Sutter Street, Approximately 0.9 miles, 17 minutes)

- ❖ From Marines' Memorial Club and Hotel (A), walk east on Sutter Street towards Powell Street
- ❖ From Galleria Park Hotel (B), walk east on Sutter Street towards Montgomery Street
- ❖ From both locations, continue on Sutter Street until Montgomery Street
- ❖ Turn right on Montgomery Street
- ❖ Continue on New Montgomery Street
- ❖ Turn right onto Howard Street
- ❖ Turn left onto Hawthorne Street. EPA Region 9 (C) will be on your left.

